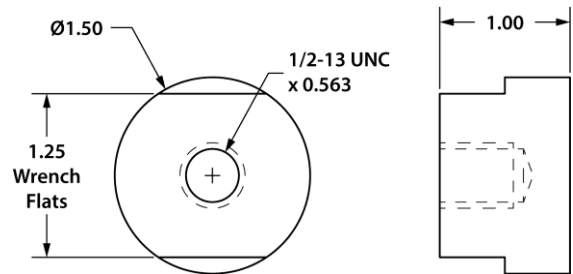


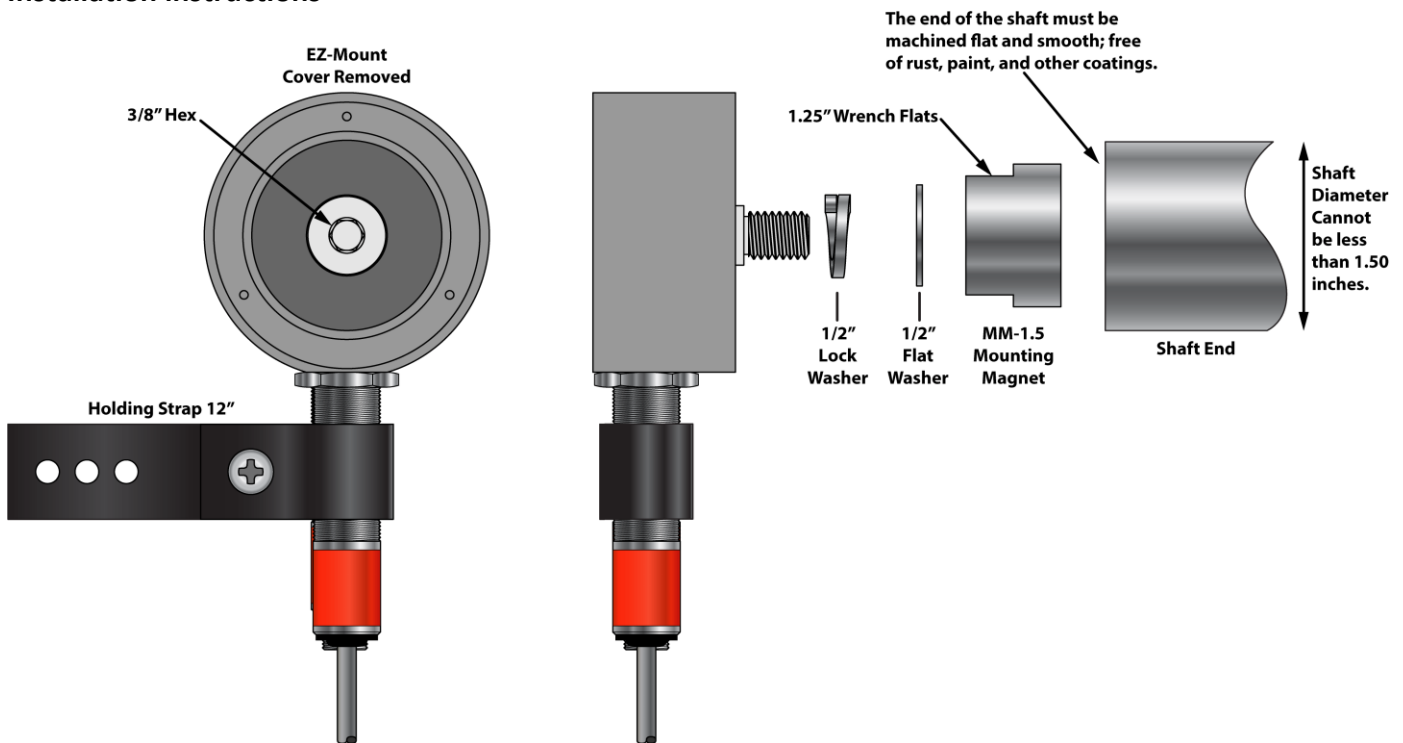
MM-1.5 x 1 x 1/2-13 Mounting Magnet

Installation with EZ 1 Mag, EZ-3/4in and EZ-18mm speed sensor mounts

p.n. 810-000070



Installation instructions



1. Remove the EZ-Mount cover (EZ-3/4in or EZ-18mm, 3 screws) to expose the 3/8" hex socket.
2. Assemble the EZ-Mount, 1/2" Lock Washer, 1/2" Flat Washer and MM-1.5 as shown.
3. Using 1.25" open-end and 3/8" hex wrenches, tighten the MM-1.5 onto the EZ-Mount threaded shaft enough to compress the split Lock Washer flat.
4. Re-install the EZ-Mount cover (3 screws).
5. **⚠ WARNING STRONG MAGNET**
Carefully remove the steel disc and plastic spacer from the MM-1.5 magnetic face.
Slide the steel disc sideways, taking care to avoid pinching your fingers.
6. **⚠ WARNING STRONG MAGNET**
Carefully attach the EZ-Mount/MM-1.5 assembly onto the shaft end, taking care to keep your fingers away from the magnetic face and shaft end.
Without removing it, shift the EZ-Mount/MM-1.5 on the shaft end as needed to center it.
7. Attach the holding strap to a secure location.