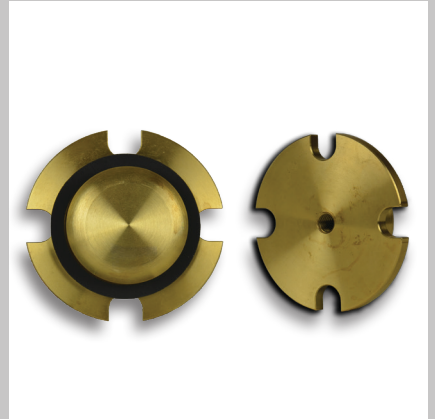


- Provides early warning of conveyor or elevator belt misalignment
- Round retrofit model fits 2" diameter cut-outs.
- Straightforward installation
- Facilitates regular, proactive maintenance inspections
- Allows replacement of any rub block without new cut-out
- Protects plant machinery, prevents unscheduled downtime, and aids in employee safety



Description

Designed for installation on elevators with a two inch diameter cut-out for belt alignment. The Retrofit brass block allows for easy adaptation to pre existing alignment holes. It was designed to save time by eliminating the need for a new alignment cut. Simply take out an existing two inch diameter alignment sensor and mount the Electro-Sensors retrofit block into the existing space.

Specialized Installation System

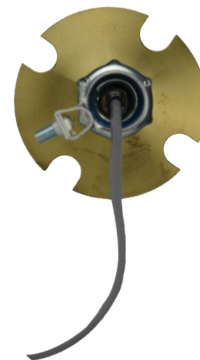
The two inch diameter circular rub block has the advantage of mounting in tight spaces. Where a standard Electro-Sensors rub block door will not fit, there is an opportunity for use of the retrofit rub block. For tight spaces the retrofit rub block used with the TT420S-LT (Straight) will provide a compact belt alignment system.

Application

The retrofit alignment block is still designed for locations such as enclosed conveyors or equipment with frames that interfere with optimum sensor mounting. This assembly has a primary brass mounting block. Compatible TT420S-LT units will use this block to monitor the alignment of the equipment.



Shown with TT420S-LT
Temperature sensor (right-angle)



Shown with TT420S-LT
Temperature sensor (Straight)

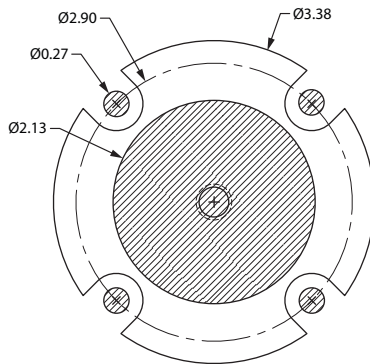
Side View of Retrofit Rub Block

The two inch diameter circular rub block and gasket is shown here.

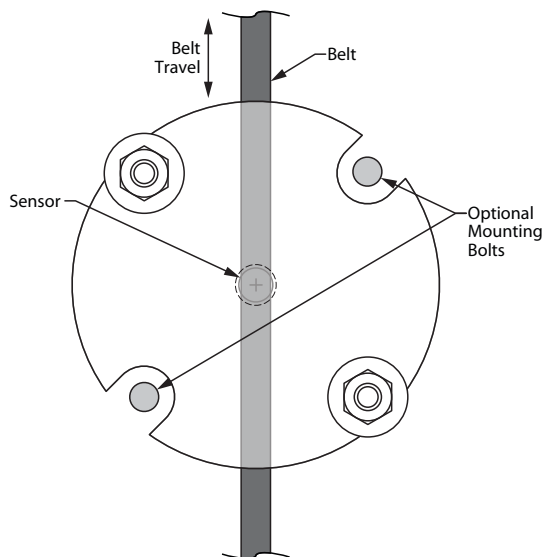


Dimensional Drawings (Dimensions in Inches)

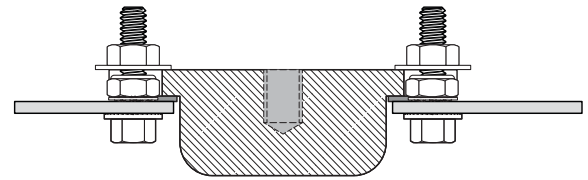
Circular Rub Block Dimensions



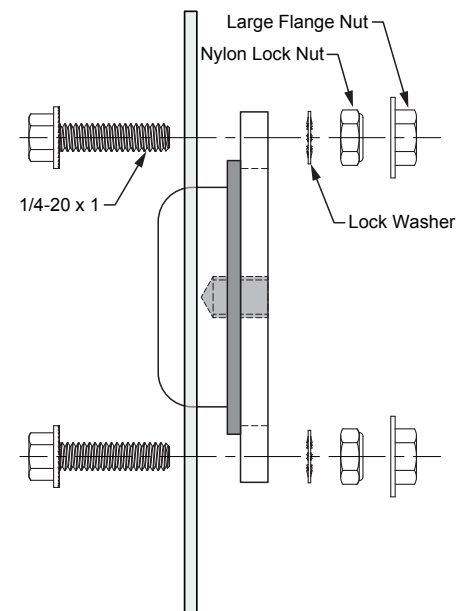
Belt Alignment



Block Installation



Exploded View



Ordering

Rub Block Retrofit Assemblies	Part Number
Brass Rub Block Retrofit Assembly ($\frac{3}{8}$ -16 Tap for use with TT420S-LT temperature sensor)	800-004400
Sub Components	Part Number
Brass Rub Block 2" diameter insert with $\frac{3}{4}$ " depth. ($\frac{3}{8}$ -16 Tap for use with TT420S-LT temperature sensor)	301-000106
Gasket seal for Circular Rub Block	295-000100

Compatible Products

TT420S-LT (Straight)	800-001524
TT420-LT (Right Angle)	800-001527

Customization

If one of our standard products does not meet your specifications, please call one of our applications specialists. Many of our products can be customized to fit specific needs.

Additional Information

For more information about product, please refer to the Rub Block Door Assemblies Installation and Operating Manual.

Email: sales@electro-sensors.com

Tel: (800)328-6170

Fax: (952)930-0130

We also have more information online at:
www.electro-sensors.com