

- Provides quick shut down to Conveyors
- Provides personnel Protection
- Keeps Damage costs Low
- Allows for shut down along entire belt
- Ambidextrous switch for all Personnel
- Safety switch Cable break detection
- Actuation force at 16 & 25 Lbs



Description

The Model PC is a rugged compact safety switch that provides a quick positive shut off of dangerous equipment in emergencies or normal operation. It is actuated by cable pulled by endangered personnel. The output contacts of the Model PC can control up to two separate circuits, one for machinery shutdown and one for alarm. The Model PS pull-cord switch is a must for employee protection. Whether it is used with conveyors, production lines, elevator equipment, assembly lines, material handling systems, cranes, etc. It provides a safe way for endangered employees to provide positive shut off to equipment in their working environment.

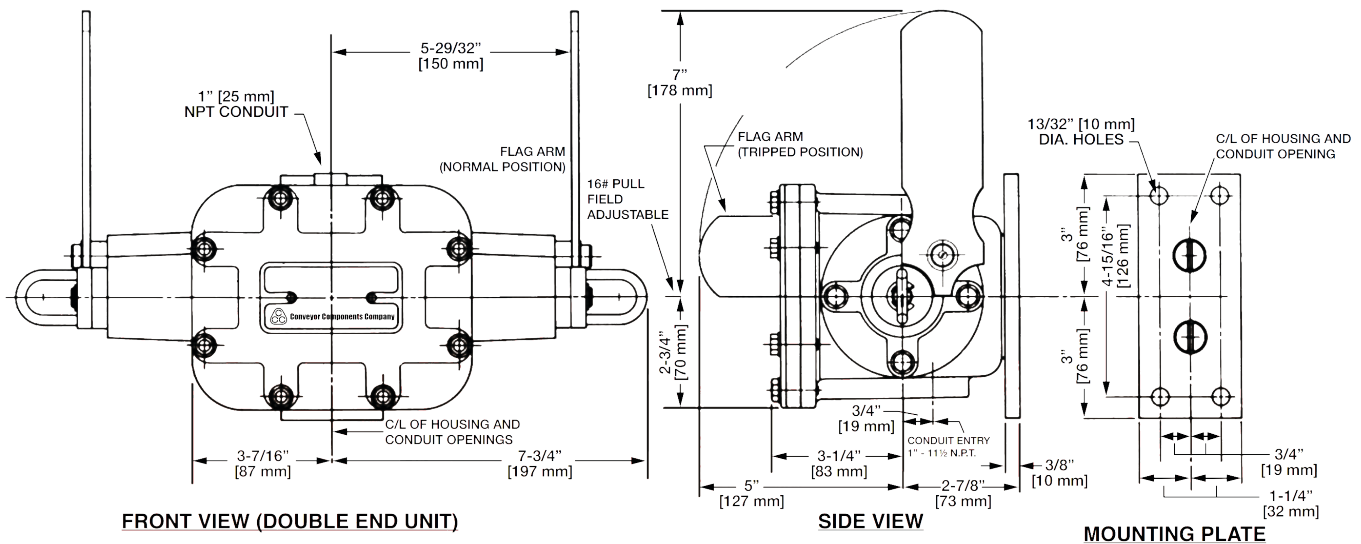
Principle of Operation

The Actuator inside the Model PC is activated through one of the two red levers, this in turn activates a micro switch which will perform an emergency shutdown on the system which it is wired to. This can include an alarm if so desired, as well as an indication light that shows whether a actuator has been activated. This permits easy detection in low visibility areas. The Model PS provides an efficient way to protect equipment that has the potential to be hazardous.

Mounting

4 holes at $\text{Ø}13/32"$ [10 mm]; Surface mount parallel to pull-cord direction standard; mounting bracket available for surfaces perpendicular to pull-cord direction.

Dimensions



Model PC Dimensional Drawing

Selection and Model Information

1-Single Pole:

Double throw micro switch

PS100-LS.....Left Hand

PS100-RS.....Right Hand

Typical Use:

Emergency shutdown of conveyors or other machinery.

1-Two Circuit:

double break micro switch for D.C. circuits

PS100-LT.....Left Hand

PS100-RT.....Right Hand

Typical Use:

Emergency shutdown of conveyors or other machinery

1-Single Pole

double throw micro switch at each end.

PS200-DS.....Double ended

Typical use:

Emergency shutdown of conveyors or other machinery.

1-Two Circuit:

Double break micro switch D.C. circuits

PS200-DT.....Double Ended

Typical use:

Emergency shutdown of conveyors or other machinery.

Available options:

Explosion-Proof for Hazardous Locations • **Epoxy Coating** for Corrosive locations

2-Single Pole:

double throw micro switch

PS200-LS.....Left

Hand

PS200-RS.....Right

Hand

Typical Use:

Emergency shutdown of conveyors or other machinery

-- with alarm or secondary function capability.

2-Two Circuit:

double break micro switch for D.C. circuits

PS200-LT.....Left Hand

PS200-RT.....Right Hand

Typical Use:

Emergency shutdown of conveyors or other machinery

-- with alarm or secondary function capability.

2-Single Pole:

double throw micro switch at each end

PS400-DS.....Double Ended

Typical Use:

Emergency shutdown of conveyors or other machinery

-- with alarm or secondary function capability.

2-Two Circuit

double break micro switch at each end for D.C. circuits

PS400-DT.....Double ended

Typical Use:

Emergency shutdown of conveyors or other machinery with alarm or secondary function ability.

Available options:

Explosion-Proof for Hazardous Locations • **Epoxy Coating** for Corrosive locations • **Optional Light** for remote or dark locations

Special Applications

Hazardous Locations:

UL/CSA explosion proof units meet NEMA Type 7 - Class 1 (Div. 1 & 2), Groups C and D NEMA Type 9 - Class II (Div. 1 & 2), Groups E, F and G for hazardous locations. Add "X" to model number, NO ADDITIONAL CHARGE.

Corrosive Locations:

Epoxy coated housing with standard flag arms and plated torsion springs. Please add "E" to model number.

Remote or Dark Locations:

Use our red warning light in dark and remote areas (requires two micro switches per end of housing). 125 VAC. (incandescent)

NOTE: Available in rain tight, dust tight and explosion proof.

Add Suffix "L" to model number.

125 VAC LED lamp available by special order.

Product Specifications

Model PC Specifications	
Weight	16 Lbs
Environment	
Certified Ambient Temperature	-30 to +40 °C [-22 to +104 °F]
Enclosure Material	319 cast aluminum
Enclosure Rating (UL)	NEMA Type 4X
Enclosure Rating (CSA)	NEMA Type 3, 3S, 4
Mounting	4 holes at Ø13/32" [10 mm]; Surface mount parallel to pull-cord direction standard; mounting bracket available for surfaces perpendicular to pull-cord direction
Switch	
Switch Type	SPDT x 4 (2 per switch end)
Contact Type	Dry Contact
Contact Rating	20A @ 480V max AC; 10A, tungsten @ 125 V AC; 1 hp 125V AC; 2 hp 250V AC; ½ A @ 125V DC; ¼ A @ 250V DC
Electrical Action	Latching (via actuator)
Electrical Connection	1" NPT x 2
Actuator	
Type	Pull Cord Switch (Double Sided Pull)
Cable Length	Maximum 100' (30.5 m) attached to each switch end.
Cable Material	galvanized aircraft cable
Cable Length	100' on each side
Action	Latching (To reset, rotate flag parallel to mounting surface)

Specifications subject to change without notice.

Product Certification

Standard	Class	Division	Group(s)
UL 508	N/A	N/A	N/A
CSA 3211-06	N/A	N/A	N/A



Ordering

Description	Model
Left Ended unit with 2 (SP/DT) Microswitches	PCL-2S
Right Ended unit with 2 (SP/DT) Microswitches	PCR-2S
Dual Ended unit with 2 (SP/DT) Microswitches per end	PCD-4S
Right Ended unit with 2 (TC/DB) Microswitches	PCR-2T
Left Ended unit with 2 (TC/DB) Microswitches	PCL-2T
Dual Ended unit with 2 (TC/DB) Microswitches per end	PCD-4T

SP/DT = Single Pull / Double Throw
TC / DB = Two Circuit / Double Break

Options and Accessories

Other Accessories		
Description	Part #	Image
Safety Cable - Vinyl Coated	PC-25	
Cable Support Eye Bolt	PC-27	
Double Ended Eye Bolt	RS-23	
Cable End Fitting	PC-28	
Pigtail-Style Cable Support Eye Bolt	RS-27P	
Conduit Plug, 3/4" NPT	RS-29	

For other options contact Sales Dept.

Customization

If one of our standard products does not meet your specifications, please call one of our applications specialists. Many of our products can be customized to fit specific needs.

Additional Information

For more information about the Model PC, please contact us at:

Email: sales@electro-sensors.com

Tel: (800)328-6170

Fax: (952)930-0130

We also have more information online at:
www.electro-sensors.com