

- Provides quick shut down to Conveyors
- Provides personnel Protection
- Keeps Damage costs Low
- Each unit can cover up to 200 ft. of conveyor.
- Ambidextrous switch for all Personnel
- Safety switch Cable break detection



Description

The RSB is designed to act as an emergency stop pull cord control on conveyors and other moving machinery, it incorporates broken cable detection.

The Model RSB has extension springs, attached to opposite ends of the pull cable, which maintain the cable under constant tension. The RSB is mounted so that it is centered between the end springs. In this way, temperature changes, which cause cable length changes, are canceled out. The operating handle is held in the center vertical position with the internal switch in a normally closed condition. If the cable is pulled or the cable breaks, the handle rotates to release the switch lever. In this way, the alarm signal is generated for either condition. The operating handle must be manually reset back to the center position after the issue has been corrected.

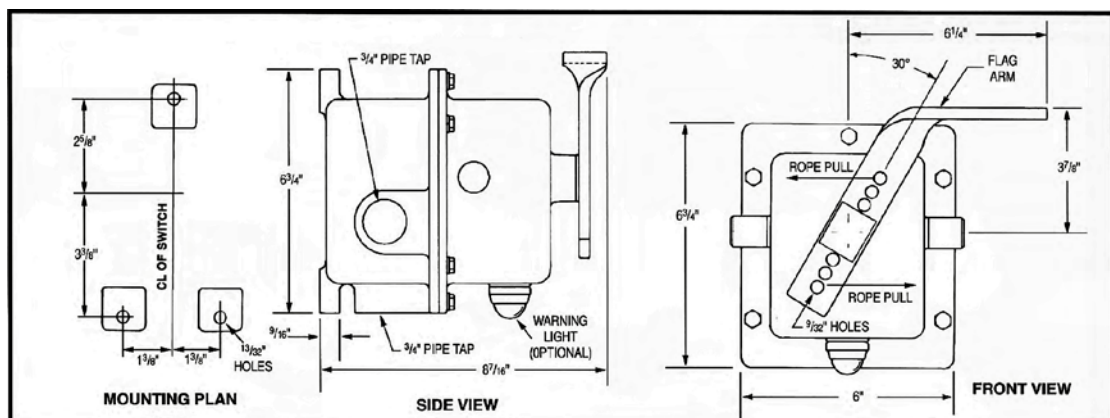
Principle of Operation / Application

The Actuator inside the Model RSB is activated through the red lever, this in turn activates a micro switch which will perform an emergency shutdown on the system which it is wired to. This can include an alarm if so desired, as well as an indication light that shows whether a actuator has been activated. This permits easy detection in low visibility areas. The RSB provides an efficient way to protect equipment that has the potential to be hazardous. The most common applications of this tool are in conveyors, production/assembly lines, and material handling. It's often used in grain, manufacturing, mining, and construction companies.

Mounting

The RS has three screw mounts on the bottom of the housing. The holes allow the switch to be mounted on a vertical surface so that the switch is turned either clockwise, or counter-clockwise.

Dimensions



*RSB Dimensional Drawing

Product Specifications

Model RSB Specifications	
Weight	12 Lbs
Environment	
Certified Ambient Temperature	0 to 40 °C [32 to 104 °F]
Functional Ambient Temperature	-50 to 85 °C [-58 to 185 °F]
Enclosure Material	319 cast aluminum
Enclosure Rating (UL)	NEMA Type 1, 3, 3R, 4, 4X
Enclosure Rating (CSA)	NEMA Type 3, 4, 4X
Mounting	3 10mm mounting holes
Switch	
Switch Type	SPDT x1
Contact Type	Dry Contact
Contact Rating (UL)	20A @ 125V, 250V or 480V AC; 1 hp @ 125V AC; 2 hp @ 250V AC
Contact Rating (CSA)	20A @ 125V, 250V or 480V AC; 1 hp @ 125V AC; 2 hp @ 250V AC; ½ A @ 125V DC; ¼ A @ 250V DC
Electrical Action	Latching (via actuator)
Electrical Connection	¾" NPT x 3
Actuator	
Cable Length	105 feet on each side (Max)
Cable Material	galvanized aircraft cable
Cable Length	100' on each side

Specifications subject to change without notice.

Product Specifications

Standard	Class	Division	Group(s)
UL 508	N/A	N/A	N/A
CSA 3211-06	N/A	N/A	N/A



*RSB with Cable Break Detection

Ordering

Model Number	Part Number
RSB	800-003300

**For other part numbers please contact Sales Dept.*

Options and Accessories

Description	Model	Picture
Accessory Mounting Kit	RS-K	
Pull Cable (In Feet 105,500, 1000,5000 options)	RS-25	
Spring Tensioning Kit with Turnbuckle (included with each unit)	RSB-20	
Cable Support Eyebolt, 1/2" x 6" Plated (x20 in RS-K kit)	RS-27	
Cable Clamp (x8 in RS-K kit)	RS-28	

Other Accessories

Conduit Plug, 3/4" NPT	RS-29	
------------------------	-------	--

RS-27-KIT: Eyebolt, End Fitting & Hardware Kit

[10 - RS-27 Eyebolts] [20 - 1/2-13 Hex Nuts - Zinc Plated] [10 - 1/2 Lockwashers - Zinc Plated] [4 - RS-28 Cable End Fittings]

Customization

If one of our standard products does not meet your specifications, please call one of our applications specialists. Many of our products can be customized to fit specific needs.

Additional Information

For more information about the Model RSB, please contact us at:

Email: sales@electro-sensors.com

Tel: (800)328-6170

Fax: (952)930-0130

We also have more information online at: www.electro-sensors.com

