

- Hinged door option allows easy installation and access
- Straightforward installation new or retrofit
- Facilitates regular proactive maintenance inspections
- Provides early warning of conveyor or elevator belt misalignment
- Protects employee safety, plant machinery and prevents unscheduled downtime
- Five unique cutout styles



## Description

Electro-Sensors, Inc. offers a wide variety of alignment rub blocks for the monitoring of belt alignment. The options include both wired and wireless options as well as fixed, adjustable, and hinged door options. Each option include a brass surface area for detection of misaligned equipment.

## Principle of Operation

Electro-sensors alignment rub blocks are mounted along the conveyor belt that needs to be monitored for misalignment. The rub block assemblies are mounted so that the brass surface area is in-line with the edge of the conveyor belt. When the belt wanders it then rubs up against the brass block. The contact with the belt creates friction and heat that the sensor in the brass block records as a rise in temperature. In the case of HazardPRO™ rub block assemblies, there is a wear detect feature. This functionality will send an alert if the brass is worn too thin, eliminating the need to continuously check the brass block.

After a brass block has worn through it must be replaced. The Rub Block Door Assemblies are all capable of having the brass piece easily replaced. The options using a 3/8-16 thread can be replaced individually from the brass block but the options with a attached sensor need to have the whole assembly replaced after the brass wears out.



*Any Rub Block Assembly with a threaded Sensor can have the brass block replaced separately*



*Rub Block Assemblies have Replaceable Brass Blocks that can be replaced apart from the Door or Fixed Mount.*

## Rub Block Assembly Options

Model	Classification	Brass Type	Door/Fixed
Standard Rub Block Door Assembly	Universal (fits 3/8-16 UNC threaded sensor)	2"x4" brass Block 4" circle Compatible	Hinged door
Adjustable Rub Block Door Assembly (Stainless Steel Option)	Universal (fits 3/8-16 UNC threaded sensor)	4"x5" brass block	Hinged door with adjustable brass block
Strut Channel Rub Block Assembly	Universal (fits 3/8-16 UNC threaded sensor)	4.63"x3.63" brass block	Attachment to Strut Channel
Threaded Snout Rub Block Door	Threaded snout to house a threaded sensor utilizing 3/8-16 sensor body threads	2"x4" brass Block 4" circle Compatible	Hinged door
Retrofit Rub Block	Universal (fits 3/8-16 UNC threaded sensor)	1 piece Brass circle (2" belt contact area)	Fixed (4 mounting bolt holes)
HazardPRO™ Fixed Rub Block	Built-In HazardPRO™ Cable with wear-detect (PUR or ARM)	2" brass Circle	Fixed (6 mounting Bolt Holes)
HazardPRO™ Rub Block Door	Built-In HazardPRO™ Cable with wear-detect (PUR or ARM)	2" brass Circle	Hinged door

## Universal Rub Block Assemblies



### Standard Hinged Rub Block Door Assembly - 800-002800

Designed for installation on most elevators and conveyors and allows for quick and easy inspection of belts and replacement of worn rub blocks saving time and promoting regular maintenance inspections. Available with 2"x4" brass block and modified 2"x4" block for 4" round cutouts.



### Adjustable Rub Block Door Assembly - 800-003000

Designed for installation in difficult to monitor locations such as equipment with frames that interfere with optimum sensor mounting. This assembly has a hinged door with slots for adjusting the rub block and sensor. After adjusting the rub block, it can slide approximately one inch into its sensing position to align closely to machine walls.

### Stainless Steel Assembly Option - 800-003001



### Strut Channel Rub Block Assembly - 776-001200

Designed for installation on open conveyors, the brass rub block is mounted on the side of the door facing the belt and strut channel can be directly connected to the other side. This assembly allows easy vertical and horizontal adjustment of the rub block for proper belt misalignment monitoring. No need to fabricate expensive and time consuming custom mounting brackets.



### Snouted Rub Block Door Assembly - 800-002803

The Snouted Rub Block Door has a threaded sensor housing that provides a connection for 1/2" liquid tight conduit. The snout runs down to the 3/8-16 threaded opening in the brass for the sensor to be connected to the brass block. Available with 2"x4" brass block and modified 2"x4" block for 4" round cutouts.

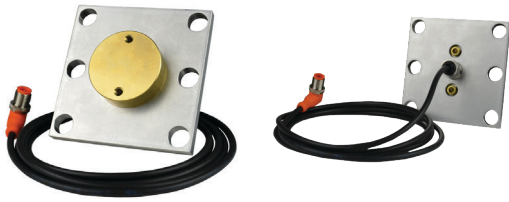


**Optional:** compatible with 4" Round Rub Block for 4" circular cutout.

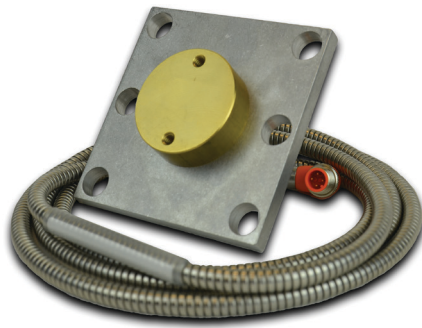


**Round 2" Rub Block Assembly - 800-004400**

For installations with electro-sensors temperature sensors where a 2" hole has been drilled.

**HazardPRO Polyurethane (PUR) Rub Block - 775-007054**

HazardPRO belt alignment sensors connect directly to the transmitter Node as an integral part of the wireless hazard monitoring system. This is an integral assembly without a replaceable brass wear block. The HazardPRO Rub Block assemblies feature "Wear Detect" which will alert the system should the sensor reach a critical wear level.

**HazardPRO Stainless Steel Jacket (ARM) Rub Block - 775-007055**

HazardPRO belt alignment sensors connect directly to the transmitter Node as an integral part of the wireless hazard monitoring system. This is an integral assembly without a replaceable brass wear block. The HazardPRO Rub Block assemblies feature "Wear Detect" which will alert the system should the sensor reach a critical wear level.

## Standard Rub Block Door Compatible Products

Model	Part Number	Approvals (NRTL)
TT420S-LT (1/2 in, c, straight)	800-001524	Class II Div 1 Grp E,F,G; Class III Div 1 (Dust-Ignition Proof)
TT420S-LT (1/2 in, c, right-angle)	800-001527	Class II Div 1 Grp E,F,G; Class III Div 1 (Dust-Ignition Proof)
RTDS-LT (1/2 in, c, straight)	800-001538	I.S. Class I and II Intrinsically Safe Simple Apparatus
RTDS-LT (1/2 in, c, right-angle)	800-001556	I.S. Class I and II Intrinsically Safe Simple Apparatus
HazardPRO™ Stud Sensor PUR	775-007124	Class II Div 1 Grp E,F,G; Class III Div 1 (Intrinsically Safe)
HazardPRO™ Stud Sensor ARM	775-007125	Class II Div 1 Grp E,F,G; Class III Div 1 (Intrinsically Safe)

## Rub Block Accessories

### Standard 4" Hole Rub Block Door Assemblies - 800-002800 & 800-002804

Brass Rub Block 2"x4" with 3/8-16 Tap	301-000101
Brass Rub Block for 4" Round Opening with 3/8-16 Tap	301-000107
Gasket Rub Block Door (Black)	295-001500
Thermal Insulator (Green)	295-001400
Rub Block Spacer (0.176" Thick)	776-001000
Rub Block Spacer for 4" Round Opening (0.176" Thick)	776-001601

### Adjustable Rub Block Door Assembly - 800-003000 & 800-003001 (Stainless Steel)

Brass Rub Block for Adjustable Door with 3/8-16 Tap	301-000102
Gasket Rub Block Door (Black)	295-001500
Thermal Insulator Slotted Door (Green)	295-001401

### Strut Channel Rub Block Assembly - 776-001200

Brass Rub Block 2"x4" with 3/8-16 Tap	301-000101
Rub Block Spacer 2"x4" (0.176" Thick)	776-001000
Gasket Rub Block Door (Black)	295-001500
Thermal Insulator (Green)	295-001400

### Threaded Snout Rub Block Assembly - 800-002803

Brass Rub Block 2"x4" with 3/8-16 Tap	301-000101
Brass Rub Block for 4" Round Opening with 3/8-16 Tap	301-000107
Gasket Rub Block Door (Black)	295-001500
Thermal Insulator (Green)	295-001400
Rub Block Spacer (0.176" Thick)	776-001000
Rub Block Spacer for 4" Round Opening (0.176" Thick)	776-001601

### Round 2" Rub Block Assembly - 800-004400

Gasket Round Rub Block Retrofit	295-000100
Brass Rub Block Round Retrofit	301-000106

### HazardPRO™ Rub Block Assembly

Standard PUR Rub Block Assembly	775-007054
ARM Rub Block Assembly	775-007055
O-Ring	315-000700
Brass Circle Rub Block	301-000300