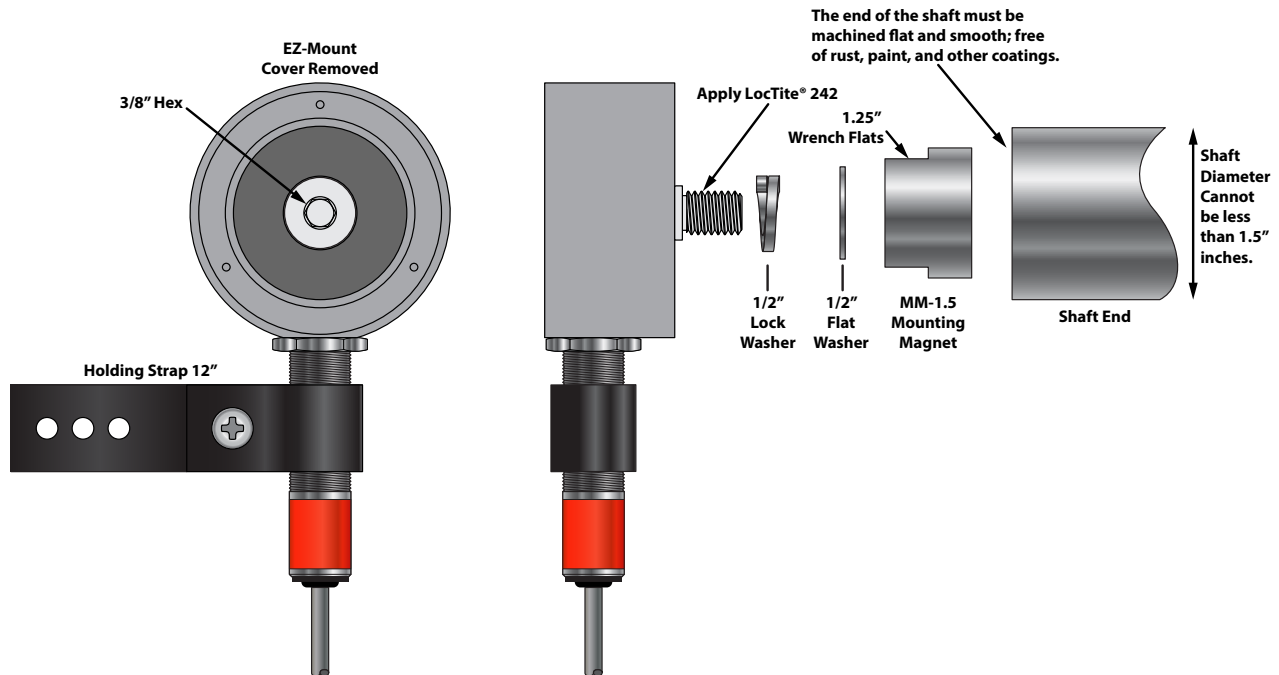
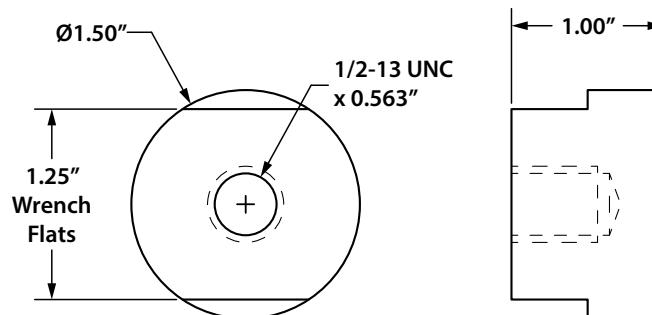


EZ-1 Mag, EZ-3/4in. and EZ-18mm with MM-1.5 Mounting Magnet

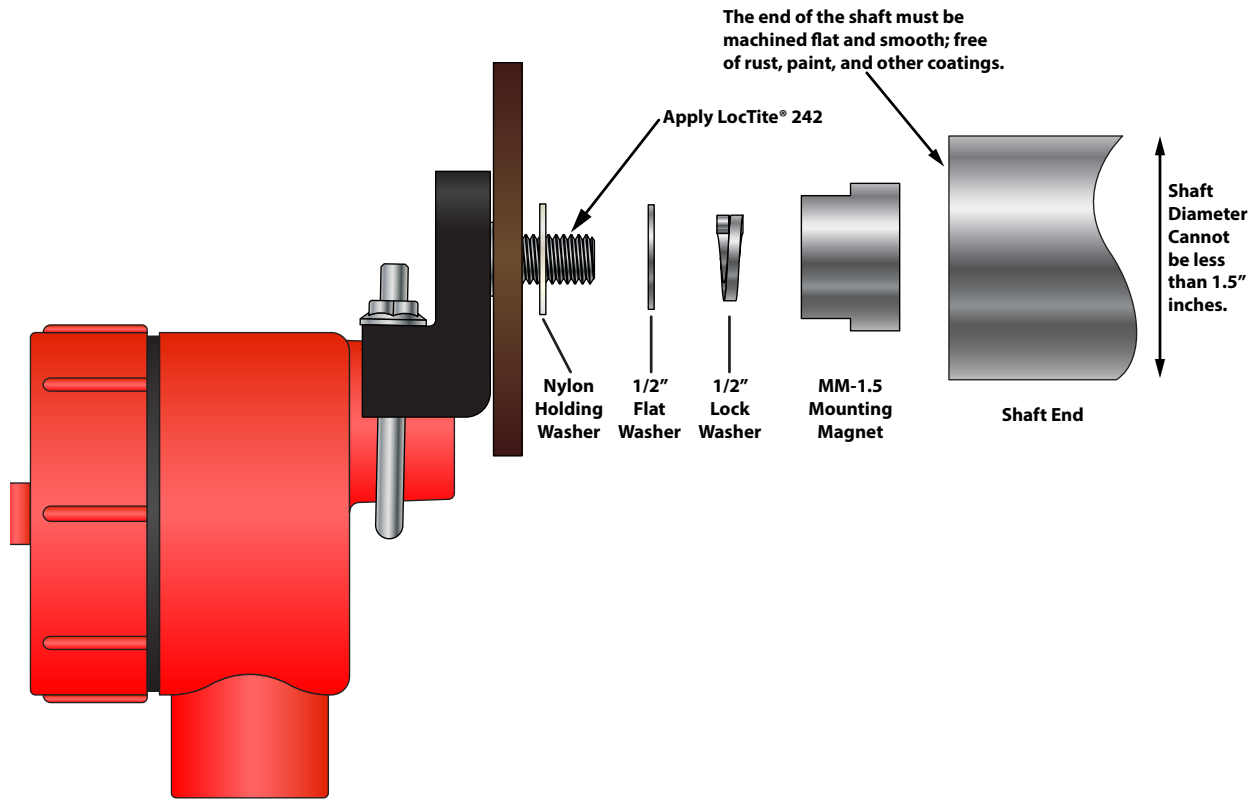


Installation procedure:

- 1) Remove cover of EZ-Mount to expose the 3/8" hex socket (3 screws).
- 2) Assemble the EZ-Mount, 1/2" washer and 1/2" lock washer onto shaft of EZ-Mount using LocTite® 242 as shown above.
- 3) Tighten MM-1.5 mounting magnet onto shaft of EZ-Mount enough to compress the split-lock washer flat.
- 4) Reinstall EZ-Mount cover (3 screws).
- 5) **⚠CAUTION STRONG MAGNET**
Carefully remove protective metal disc and spacer from face of magnet. Slide the steel disc sideways, taking care to avoid pinching your fingers.
- 6) **⚠CAUTION STRONG MAGNET**
Carefully attach the EZ-Mount/MM-1.5 assembly on to the shaft end, taking care to keep your fingers away from the magnetic face and shaft end.
- 7) Attach holding strap to a secure location.



EZ-100 with MM-1.5 Mounting Magnet



Installation procedure:

- 1) Assemble the EZ-100 Mount, 1/2" washer, and 1/2" lock washer onto shaft of EZ-100 Mount using Loctite® 242 as shown above.
- 2) Tighten MM-1.5 mounting magnet onto shaft of EZ-100 Mount enough to compress the split-lock washer flat.
- 3) **⚠ CAUTION STRONG MAGNET**
Carefully remove protective metal disc and spacer from face of magnet. Slide the steel disc sideways, taking care to avoid pinching your fingers.
- 4) **⚠ CAUTION STRONG MAGNET**
Carefully attach the EZ-100 Mount/MM-1.5 assembly on to the shaft end, taking care to keep your fingers away from the magnetic face and shaft end.
- 5) Secure wiring and conduit.